

### Key Features & Benefits:

- Housing:
  - Strip fixture dimensions (24" x 1.625" x 2.75")
  - Die-formed and embossed code 22 gauge steel
  - Finish is high reflectance baked white enamel
- Gear Tray:
  - Flat heavy gauge die-formed code grade steel for all components
  - Easy Access for quick installation
- Long Life:
  - 10 year warranty (12 hour run times)
  - 7 year warranty (24 hour run times)
- 0-10v Dimming Available in Specific Models
- Control Options:
  - Photocell
  - Occupancy
- Emergency Capable
- 3/4" Knockouts on Both Ends

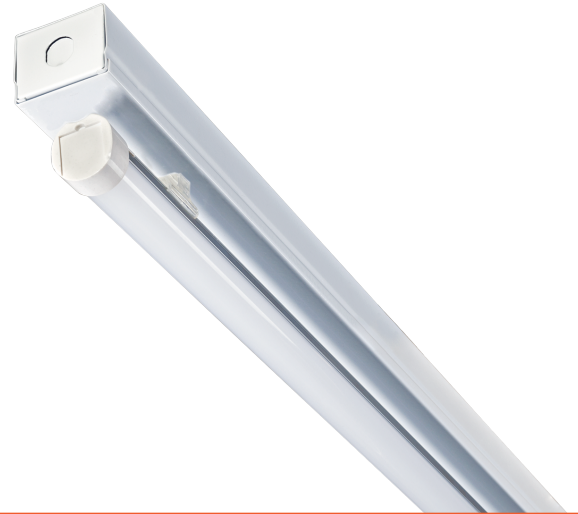


Project: \_\_\_\_\_

Date: \_\_\_\_\_

Catalog #: \_\_\_\_\_

Notes: \_\_\_\_\_



### Electrical Data:

#### Light Specifications:

Lumen Output: Up to 1,729 Lumens  
 Efficacy (lm/W): Up to 133 Lumens per Watt  
 Kelvin: 3000K, 3500K, 4000K, 5000K  
 Color Rendering Index (CRI): >82  
 Rated Life: > 80,000 hrs

#### Driver Data:

Input Voltage: 120-277 VAC  
 Input Power: 13W  
 Input Current @ 120V: 0.108 Amps  
 Input Current @ 240V: 0.054 Amps  
 Input Current @ 277V: 0.0469 Amps  
 Total Harmonic Distortion (THD): <10%  
 Power Factor: >0.99  
 Operating Temperature: -4 ~ 122°F

### Catalog Data:

| ITEM#                 | WATTS | LUMEN OUTPUT | EFFICACY (lm/W) | KELVIN |
|-----------------------|-------|--------------|-----------------|--------|
| ESL-Ti-NBS2-S-13W-F30 | 13W   | 1,612        | 124             | 3000K  |
| ESL-Ti-NBS2-S-13W-F35 | 13W   | 1,651        | 127             | 3500K  |
| ESL-Ti-NBS2-S-13W-F40 | 13W   | 1,690        | 130             | 4000K  |
| ESL-Ti-NBS2-S-13W-F50 | 13W   | 1,729        | 133             | 5000K  |

\* Made in the USA option available upon request

### Ordering Guide:

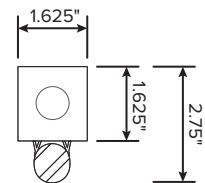
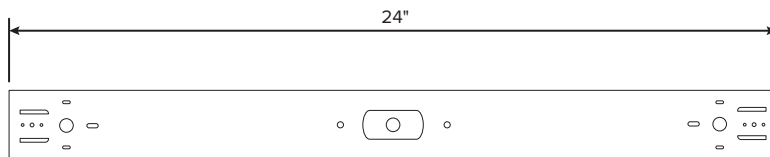
|            |   |           |   |             |   |          |   |                |   |             |   |  |   |         |
|------------|---|-----------|---|-------------|---|----------|---|----------------|---|-------------|---|--|---|---------|
| <b>ESL</b> | - | <b>Ti</b> | - | <b>NBS2</b> | - | <b>S</b> | - | <b>13W</b>     | - | <b>F</b>    | - |  | - |         |
| ESL        |   | TYPE      |   | SERIES      |   | LISTING  |   | WATTS          |   | LENS        |   | KELVIN   |   | OPTIONS |
|            |   | Ti Series |   | NBS2        |   | S        |   | 13W (13 Watts) |   | F (Frosted) |   | 30 (3000 Kelvin)<br>35 (3500 Kelvin)<br>40 (4000 Kelvin)<br>50 (5000 Kelvin) |   |         |

Example Part Number: ESL-Ti-NBS2-S-13W-F30

### Options (Add as Suffix):

- **Emergency:**
    - ESL-EMG-DC-8W (External emergency backup)
  - **Sensors:**
    - ESL-1OCC (External Occupancy Sensor)
    - ESL-4OCC (Microwave Occupancy Sensor)
    - ESL-4OPH (Photocell)
    - ESL-4OCP (Photocell & Microwave Occupancy Sensor)
  - **Cord Sets:\***
    - ESL-CS3W-6 (Cord Set, White, 3 wire, 6 foot)
    - ESL-CS3W-6P (Cord Set, White, 3 wire, 6 foot, Standard Plug)
    - ESL-CS3W-12 (Cord Set, White, 3 wire, 12 foot)
    - ESL-CS3W-12P (Cord Set, White, 3 wire, 12 foot, Standard Plug)
  - **Whips: Flexible Conduit:**
    - ESL-WP3-6 (Whip, 3 wire, 6 foot)
    - ESL-WP3-12 (Whip, 3 wire, 12 foot)
  - **Mounting:**
    - ESL-VH01 (V-Hangers sets)
    - ESL-JC01 (Jack Chain - per foot)
    - ESL-HB-PM01 (Pendant Mounting)
  - **Miscellaneous:**
    - ESL-SPD-277-1 (Surge Protector; 100-277V)
    - ESL-480V-SD01 (480 Volt Step Down Transformer)
- \*Other lengths and black cord available upon request

### Dimensions:



### 2' - STRIP SERIES



| NARROW<br>SINGLE LAMP BODY | SERIES                | PART NUMBER           | WATTS | (lm/W)* | LUMEN OUTPUT* |
|----------------------------|-----------------------|-----------------------|-------|---------|---------------|
|                            | TI NBS2               | ESL-Ti-NBS2-S-10W-FXX | 10    | 133     | 1,330         |
| TI NBS2                    | ESL-Ti-NBS2-S-13W-FXX | 13                    | 133   | 1,729   |               |
| —WIDE—<br>SINGLE LAMP BODY | SERIES                | PART NUMBER           | WATTS | (lm/W)* | LUMEN OUTPUT* |
|                            | TI WBS2               | ESL-Ti-WBS2-S-10W-FXX | 10    | 133     | 1,330         |
| TI WBS2                    | ESL-Ti-WBS2-S-13W-FXX | 13                    | 133   | 1,729   |               |
| —WIDE—<br>TWO LAMP BODY    | SERIES                | PART NUMBER           | WATTS | (lm/W)* | LUMEN OUTPUT* |
|                            | TI WBS2               | ESL-Ti-WBS2-S-20W-FXX | 20    | 133     | 2,660         |
| TI WBS2                    | ESL-Ti-WBS2-S-26W-FXX | 26                    | 133   | 3,458   |               |

### 4' - STRIP SERIES



| NARROW<br>SINGLE LAMP BODY | SERIES    | PART NUMBER             | WATTS | (lm/W)* | LUMEN OUTPUT* |
|----------------------------|-----------|-------------------------|-------|---------|---------------|
|                            | TI NBS4   | ESL-Ti-NBS4-S-13W-FXX   | 13    | 133     | 1,729         |
|                            | TI NBS4   | ESL-Ti-NBS4-S-15W-FXX   | 15    | 133     | 1,995         |
|                            | TI NBS4   | ESL-Ti-NBS4-S-18W-FXX   | 18    | 133     | 2,394         |
|                            | TI NBS4   | ESL-Ti-NBS4-S-22W-FXX   | 22    | 133     | 2,926         |
|                            | TiHO NBS4 | ESL-TiHO-NBS4-S-30W-FYY | 30    | 126     | 3,780         |
| —WIDE—<br>SINGLE LAMP BODY | SERIES    | PART NUMBER             | WATTS | (lm/W)* | LUMEN OUTPUT* |
|                            | TI WBS4   | ESL-Ti-WBS4-S-13W-FXX   | 13    | 146     | 1,818         |
|                            | TI WBS4   | ESL-Ti-WBS4-S-15W-FXX   | 15    | 143     | 2,101         |
|                            | TI WBS4   | ESL-Ti-WBS4-S-18W-FXX   | 18    | 143     | 2,473         |
|                            | TI WBS4   | ESL-Ti-WBS4-S-22W-FXX   | 22    | 138     | 2,862         |
|                            | TiHO WBS4 | ESL-TiHO-WBS4-S-30W-FYY | 30    | 144     | 4,089         |
| —WIDE—<br>TWO LAMP BODY    | SERIES    | PART NUMBER             | WATTS | (lm/W)* | LUMEN OUTPUT* |
|                            | TI WBS4   | ESL-Ti-WBS4-S-26W-FXX   | 26    | 144     | 3,587         |
|                            | TI WBS4   | ESL-Ti-WBS4-S-30W-FXX   | 30    | 139     | 3,939         |
|                            | TI WBS4   | ESL-Ti-WBS4-S-36W-FXX   | 36    | 139     | 4,746         |
|                            | TI WBS4   | ESL-Ti-WBS4-S-44W-FXX   | 44    | 134     | 5,793         |
|                            | TiHO WBS4 | ESL-TiHO-WBS4-S-60W-FYY | 60    | 140     | 8,522         |

### 8' - STRIP SERIES



| —WIDE—<br>TWO LAMP BODY | SERIES    | PART NUMBER              | WATTS | (lm/W)* | LUMEN OUTPUT* |
|-------------------------|-----------|--------------------------|-------|---------|---------------|
|                         | TI WBS8   | ESL-Ti-WBS8-S-26W-FXX    | 26    | 146     | 3,528         |
|                         | TI WBS8   | ESL-Ti-WBS8-S-30W-FXX    | 30    | 143     | 4,031         |
|                         | TI WBS8   | ESL-Ti-WBS8-S-36W-FXX    | 36    | 143     | 4,975         |
|                         | TI WBS8   | ESL-Ti-WBS8-S-44W-FXX    | 44    | 140     | 5,944         |
|                         | TiHO WBS8 | ESL-TiHO-WBS8-S-60W-FYY  | 60    | 144     | 8,538         |
| —WIDE—<br>TWO LAMP BODY | SERIES    | PART NUMBER              | WATTS | (lm/W)* | LUMEN OUTPUT* |
|                         | TI WBS8   | ESL-Ti-WBS8-S-52W-FXX    | 52    | 144     | 6,898         |
|                         | TI WBS8   | ESL-Ti-WBS8-S-60W-FXX    | 60    | 139     | 8,559         |
|                         | TI WBS8   | ESL-Ti-WBS8-S-72W-FXX    | 72    | 139     | 9,701         |
|                         | TI WBS8   | ESL-Ti-WBS8-S-88W-FXX    | 88    | 134     | 11,690        |
|                         | TiHO WBS8 | ESL-TiHO-WBS8-S-120W-FYY | 120   | 140     | 17,154        |

\* At 5000K. See spec sheets for other kelvins  
 XX = 30, 35, 40, or 50 for kelvin temperature  
 YY = 40 or 50 for kelvin temperature