

Key Features & Benefits:

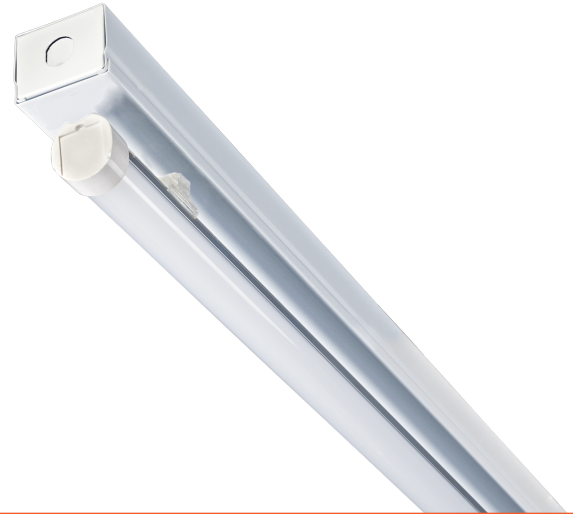
- Housing:
 - Strip fixture dimensions (48" x 1.625" x 2.75")
 - Die-formed and embossed code 22 gauge steel
 - Finish is high reflectance baked white enamel
- Gear Tray:
 - Flat heavy gauge die-formed code grade steel for all components
 - Easy Access for quick installation
- Long Life:
 - 10 year warranty (12 hour run times)
 - 7 year warranty (24 hour run times)
- 0-10V Dimming Available in Specific Models
- Control Options:
 - Photocell
 - Occupancy
- Emergency Capable
- 3/4" Knockouts on Both Ends



Project: _____ Date: _____

Catalog #: _____

Notes: _____



Electrical Data:

Light Specifications:

Lumen Output: Up to 1,729 Lumens
 Efficacy (lm/W): Up to 133 Lumens per Watt
 Kelvin: 3000K, 3500K, 4000K, 5000K
 Color Rendering Index (CRI): >82
 Rated Life: > 80,000 hrs

Driver Data:

Input Voltage: 120-277 VAC
 Input Power: 13W
 Input Current @ 120V: 0.108 Amps
 Input Current @ 240V: 0.054 Amps
 Input Current @ 277V: 0.0469 Amps
 Total Harmonic Distortion (THD): <10%
 Power Factor: >0.99
 Operating Temperature: -4 ~ 122°F

Catalog Data:

ITEM#	WATTS	LUMEN OUTPUT	EFFICACY (lm/W)	KELVIN
ESL-Ti-NBS4-S-13W-F30	13W	1,690	130	3000K
ESL-Ti-NBS4-S-13W-F35	13W	1,690	130	3500K
ESL-Ti-NBS4-S-13W-F40	13W	1,703	131	4000K
ESL-Ti-NBS4-S-13W-F50	13W	1,729	133	5000K

* Made in the USA option available upon request

Ordering Guide:

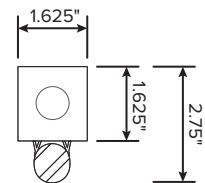
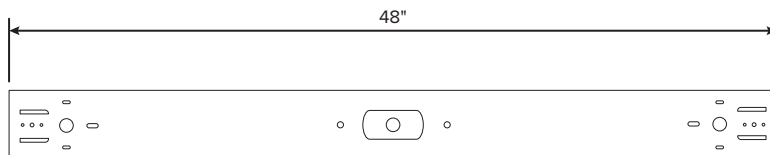
ESL	-	Ti	-	NBS4	-	S	-	13W	-	F	-		-	
ESL		TYPE		SERIES		LISTING		WATTS		LENS		KELVIN		OPTIONS
		Ti Series		NBS4		S		13W (13 Watts)		F (Frosted)		30 (3000 Kelvin) 35 (3500 Kelvin) 40 (4000 Kelvin) 50 (5000 Kelvin)		

Example Part Number: ESL-Ti-NBS4-S-13W-F30

Options (Add as Suffix):

- **Emergency:**
 - ESL-EMG-DC-8W (External emergency backup)
 - **Sensors:**
 - ESL-1OCC (External Occupancy Sensor)
 - ESL-4OCC (Microwave Occupancy Sensor)
 - ESL-4OPH (Photocell)
 - ESL-4OCP (Photocell & Microwave Occupancy Sensor)
 - **Cord Sets:***
 - ESL-CS3W-6 (Cord Set, White, 3 wire, 6 foot)
 - ESL-CS3W-6P (Cord Set, White, 3 wire, 6 foot, Standard Plug)
 - ESL-CS3W-12 (Cord Set, White, 3 wire, 12 foot)
 - ESL-CS3W-12P (Cord Set, White, 3 wire, 12 foot, Standard Plug)
 - **Whips: Flexible Conduit:**
 - ESL-WP3-6 (Whip, 3 wire, 6 foot)
 - ESL-WP3-12 (Whip, 3 wire, 12 foot)
 - **Mounting:**
 - ESL-VH01 (V-Hangers sets)
 - ESL-JC01 (Jack Chain - per foot)
 - ESL-HB-PM01 (Pendant Mounting)
 - **Miscellaneous:**
 - ESL-SPD-277-1 (Surge Protector; 100-277V)
 - ESL-480V-SD01 (480 Volt Step Down Transformer)
- *Other lengths and black cord available upon request

Dimensions:



2' - STRIP SERIES



NARROW SINGLE LAMP BODY	SERIES	PART NUMBER	WATTS	(lm/W)*	LUMEN OUTPUT*
	TI NBS2	ESL-Ti-NBS2-S-10W-FXX	10	133	1,330
	TI NBS2	ESL-Ti-NBS2-S-13W-FXX	13	133	1,729
— WIDE — SINGLE LAMP BODY	SERIES	PART NUMBER	WATTS	(lm/W)*	LUMEN OUTPUT*
	TI WBS2	ESL-Ti-WBS2-S-10W-FXX	10	133	1,330
	TI WBS2	ESL-Ti-WBS2-S-13W-FXX	13	133	1,729
— WIDE — TWO LAMP BODY	SERIES	PART NUMBER	WATTS	(lm/W)*	LUMEN OUTPUT*
	TI WBS2	ESL-Ti-WBS2-S-20W-FXX	20	133	2,660
	TI WBS2	ESL-Ti-WBS2-S-26W-FXX	26	133	3,458

4' - STRIP SERIES



NARROW SINGLE LAMP BODY	SERIES	PART NUMBER	WATTS	(lm/W)*	LUMEN OUTPUT*
	TI NBS4	ESL-Ti-NBS4-S-13W-FXX	13	133	1,729
	TI NBS4	ESL-Ti-NBS4-S-15W-FXX	15	133	1,995
	TI NBS4	ESL-Ti-NBS4-S-18W-FXX	18	133	2,394
	TI NBS4	ESL-Ti-NBS4-S-22W-FXX	22	133	2,926
	TiHO NBS4	ESL-TiHO-NBS4-S-30W-FYY	30	126	3,780
— WIDE — SINGLE LAMP BODY	SERIES	PART NUMBER	WATTS	(lm/W)*	LUMEN OUTPUT*
	TI WBS4	ESL-Ti-WBS4-S-13W-FXX	13	146	1,818
	TI WBS4	ESL-Ti-WBS4-S-15W-FXX	15	143	2,101
	TI WBS4	ESL-Ti-WBS4-S-18W-FXX	18	143	2,473
	TI WBS4	ESL-Ti-WBS4-S-22W-FXX	22	138	2,862
	TiHO WBS4	ESL-TiHO-WBS4-S-30W-FYY	30	144	4,089
— WIDE — TWO LAMP BODY	SERIES	PART NUMBER	WATTS	(lm/W)*	LUMEN OUTPUT*
	TI WBS4	ESL-Ti-WBS4-S-26W-FXX	26	144	3,587
	TI WBS4	ESL-Ti-WBS4-S-30W-FXX	30	139	3,939
	TI WBS4	ESL-Ti-WBS4-S-36W-FXX	36	139	4,746
	TI WBS4	ESL-Ti-WBS4-S-44W-FXX	44	134	5,793
	TiHO WBS4	ESL-TiHO-WBS4-S-60W-FYY	60	140	8,522

8' - STRIP SERIES



— WIDE — TWO LAMP BODY	SERIES	PART NUMBER	WATTS	(lm/W)*	LUMEN OUTPUT*
	TI WBS8	ESL-Ti-WBS8-S-26W-FXX	26	146	3,528
	TI WBS8	ESL-Ti-WBS8-S-30W-FXX	30	143	4,031
	TI WBS8	ESL-Ti-WBS8-S-36W-FXX	36	143	4,975
	TI WBS8	ESL-Ti-WBS8-S-44W-FXX	44	140	5,944
	TiHO WBS8	ESL-TiHO-WBS8-S-60W-FYY	60	144	8,538
— WIDE — TWO LAMP BODY	SERIES	PART NUMBER	WATTS	(lm/W)*	LUMEN OUTPUT*
	TI WBS8	ESL-Ti-WBS8-S-52W-FXX	52	144	6,898
	TI WBS8	ESL-Ti-WBS8-S-60W-FXX	60	139	8,559
	TI WBS8	ESL-Ti-WBS8-S-72W-FXX	72	139	9,701
	TI WBS8	ESL-Ti-WBS8-S-88W-FXX	88	134	11,690
	TiHO WBS8	ESL-TiHO-WBS8-S-120W-FYY	120	140	17,154

* At 5000K. See spec sheets for other kelvins
XX = 30, 35, 40, or 50 for kelvin temperature
YY = 40 or 50 for kelvin temperature