



COMMERCIAL CAN RETROFIT

CCR SERIES — INDOOR & OUTDOOR LED FIXTURES



QUICKLY UPGRADE RECESSED FIXTURES

ESL Vision's CCR Series is Extremely Fast to Install, Saving Time and Money on Retrofit or New Construction Projects.



FOR VIRTUALLY ANY CAN PLACEMENT

- Use in Both IC or Non-IC Applications
- ETL Wet Location Listed
- Energy Star Listed

FORM & FUNCTION

- Recessed Bevel for Optimal Light
- TRIAC Dimmable at 120V (4" & 6")
- 0–10V Dimmable (8")



MULTIPLE OPTIONS

- Emergency Backup Available
- 4" Available in 10W
- 6" Available in 10W and 15W
- 8" Available in 25W
- 3000K, 3500K, 4000K and 5000K



FAST INSTALLATION

- Integrated Junction Box
- Retrofit or New Construction
- Compatible with NM (Romex) or BX (Metallic) Wiring

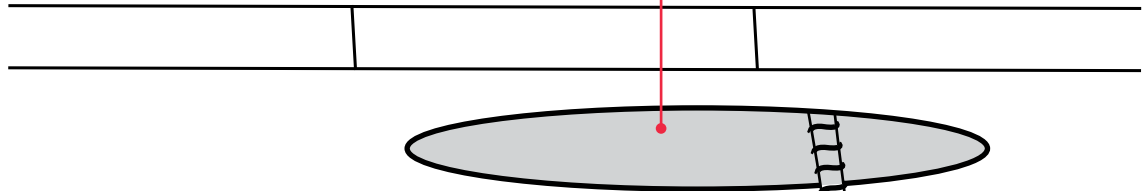
SECURE MOUNTING

- Strong Spring Clips Secure Housing to Drywall, Ceiling Tiles or Downlight Mounting Plate

INSTALLATION MADE EASY

PREPARE INSTALLATION AREA

- Turn Off Power
- Remove Existing Can or Cut Hole in Ceiling Material
- Run Supply Lines



MAKE ELECTRICAL CONNECTION

- Remove J-Box Cover
- Secure Connections
- Replace Cover



SECURE HOUSING IN CEILING

- Press Spring Loaded Clips Against the Housing Body
- While Holding the Clips, Push Housing Body Through Hole
- Fixture Snaps into Place Using Clips

COMPATIBLE WITH BX (METALLIC) OR NM (ROMEX) WIRING



ORDERING GUIDE & SPECS

ESL	-	R(s)	-	(yy)	-	1	(xx)	-	277	-	
ESL	-	SIZE	-	WATTS	-	GENERATION	KELVIN	-	VOLTAGE	-	OPTIONS

OPTIONS/ACCESSORIES(Add as Suffix)

- ESL-EMG-SL1-CDC-9W Emergency Backup Battery Unit, Auto Test Function, 9 Watts Output, 90 Minutes Min, 120–277VAC Input, 10–300VDC Output, Closed Frame with Dual Flex Conduits, UL Listed for Factory or Field install, Title 20
- ESL-EMG-SL1-CDC-18W Emergency Backup Battery Unit, Auto Test Function, 18 Watts Output, 90 Minutes Min, 120–277VAC Input, 20–300VDC Output, Closed Frame with Dual Flex Conduits, UL Listed for Factory or Field install, Title 20

	PART NUMBER	SIZE	MAX [†] lm/W	LUMEN [†] OUTPUT	DIMMING	INPUT* VOLTAGE	AVAILABLE WATTAGES (yy)	AVAILABLE KELVIN (xx)
4"	ESL-CCR-R4-10W-1xx-277	ROUND (R4)	65	650	TRIAC	120–277 VAC (277)	10W	3000K (30) 3500K (35) 4000K (40) 5000K (50)
6"	ESL-CCR-R56-10W-1xx ESL-CCR-R56-15W-1xx-277	ROUND (R56)	66 75	660 1,130	TRIAC	120 VAC 120–277 VAC (277)	10W* 15W	3000K (30) 3500K (35) 4000K (40) 5000K (50)
8"	ESL-CCR-R8-25W-1xx-10V	ROUND (R8)	72	1,800	0–10V	120–277 VAC (277)	25W	3000K (30) 3500K (35) 4000K (40) 5000K (50)

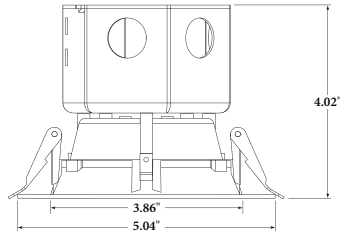
*5000K efficacy & lumen output data listed

*CCR-R56-10W is NOT 277 VAC

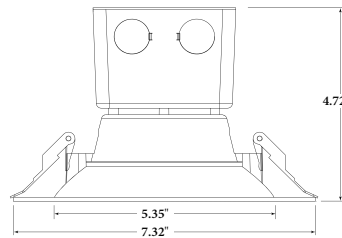


PRODUCT DIMENSIONS

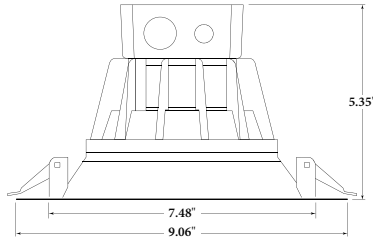
4" ROUND



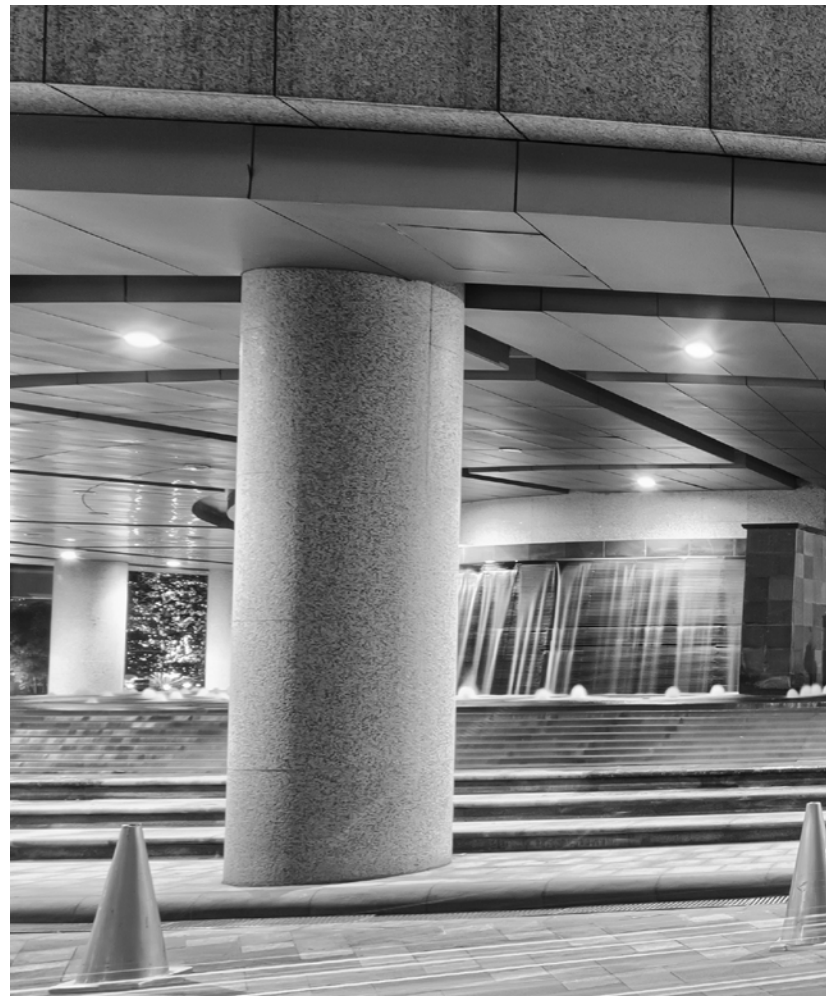
6" ROUND



8" ROUND



IC RATED



OPTIONS



EMERGENCY BACKUP

ESL-EMG-SL1-CDC-9W
ESL-EMG-SL1-CDC-18W

External Emergency Backup
External Emergency Backup



4" ROUND



6" ROUND



8" ROUND





WWW.ESLVISION.COM

888.493.5559

Headquarters
1136 S 3600 W
Salt Lake City, UT, USA

Atlanta
6371 Corley Road
Norcross, GA, USA