

### Key Features & Benefits:

- 0-10V Dimming Control
- Works With Ballast or LED Drivers
- Adjustable Via Built in Dip Switches or Remote Control
- High and Low Modes - Fully Adjustable from 0 to 10V
- Optional Cut Off Delay
- Time Delay From 10 Seconds to 60 Minutes
- Adjustable Ramp Up and Fade Down Times
- Durable and Reliable Operation:
  - High Inrush Stability
  - Zero Crossing Circuitry

Project: \_\_\_\_\_

Date: \_\_\_\_\_

Catalog #: \_\_\_\_\_

Notes: \_\_\_\_\_



### Technical Specifications:

Power Supply: 120-277 VAC, 50/60Hz  
 Maximum Load @ -40°F ~ 158°F:  
     Resistive/Tungsten - 600W@ 120V  
     Ballast Electronic (LED) - 800/1200VA@ 120/277V  
 HF System: 5.8Ghz CW  
 Sensor Type: Microwave  
 Sensitivity Adjustment: 20% / 50% / 75% / 100%  
 Dimming Control Output: 0-10V Max. 25mA sinking current  
 Detection Radius/angle: Max. 26ft/360°  
 Detection Area (square footage): 2123ft<sup>2</sup>@20ft/360°  
 Mounting Height: 20ft Max  
 Remote Range: 50ft  
 Humidity: Max 95% RH  
 Temperature: -40°F ~ 158°F (-40°C ~ 70°C)

### ESL-REM-100\*

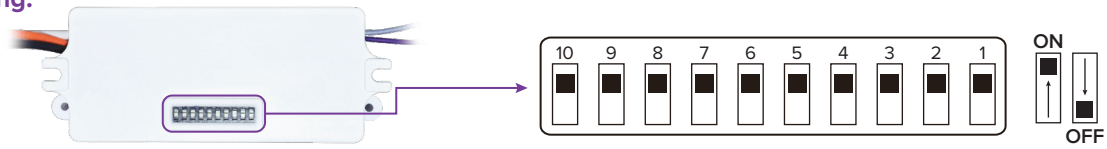
\*ESL-REM-100 Sold Separately



### Catalog Data:

ITEM#	COLOR	DESCRIPTION
ESL-4OCC-LDD	WHITE	Photocell/Occupancy Sensor for Standard Mounting, Dip Switch, 0-10v
ESL-REM-100	BLACK	Remote control for 2OCC, 3OCC, 4OCC, 5OCC and 8OCC

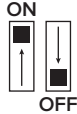
### Dip Switch Programming:



### Detection Range (Sensitivity):

Detection range is the term used to describe the radii of the circular detection zone after sensor has been mounted and installed at a height of 20ft.

SENSITIVITY		
1	2	%
OFF	OFF	20%
OFF	ON	50%
ON	OFF	75%
ON	ON	100%



### Hold Time:

The light can be set to stay ON for any period of time between approximately 10 seconds to a maximum of 60 minutes. Any detection of movement before the programmed hold time elapses and the timer will re-start. It is recommended to select the shortest time for adjusting the detection zone and for performing the walk test.

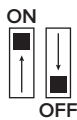
TIME		
3	4	⊙
OFF	OFF	10s
OFF	ON	10min
ON	OFF	30min
ON	ON	60min



### Photo Control:

The photocell light settings can be adjusted to: Off = no change in light will affect occupancy. At 10lux (1 fc) fixture will go off. At 30lux (3 fc) fixture will go off. At 50lux (5 fc) fixture will go off.

LIGHT		
5	6	lux
OFF	OFF	☀
OFF	ON	10lux
ON	OFF	30lux
ON	ON	50lux



### Stand-by Light Level:

When no movement is detected after hold time elapses, the light dims to stand-by level (10%/30%/50%).

STAND-BY LEVEL		
7	8	%
OFF	OFF	0%
OFF	ON	10%
ON	OFF	30%
ON	ON	50%



### Stand-by Time:

Light will switch to OFF after the stand-by time of (1min/30min/60min) has elapsed.

STAND-BY TIME		
9	10	⊙
OFF	OFF	+∞
OFF	ON	1min
ON	OFF	30min
ON	ON	60min



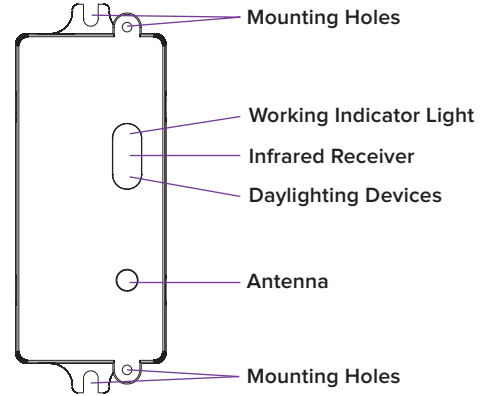
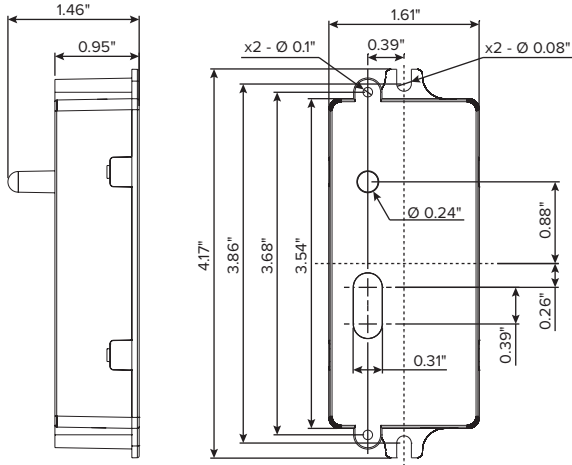
NOTE: If you set the STAND-BY LEVEL at 0%, and the STAND-BY TIME at + ∞ it becomes an ON/OFF function.

### Remote Control Programming:

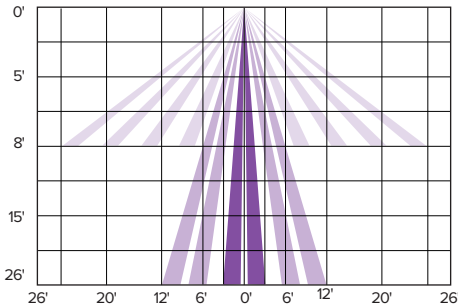
The ESL-REM-100 (Sold Separately) can be used to program the 40CC-LDD remotely. With a range of 50ft this allows for the flexibility to re-program for any reason, at any time. Please see REM-100 spec sheet and/or instruction guide for more detailed information.



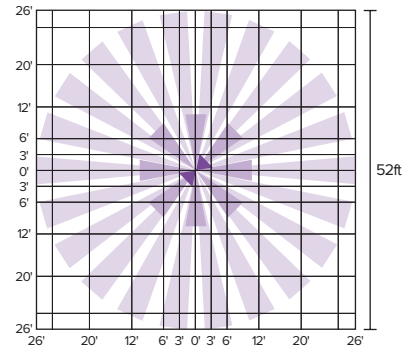
### Dimensions:



### Coverage:



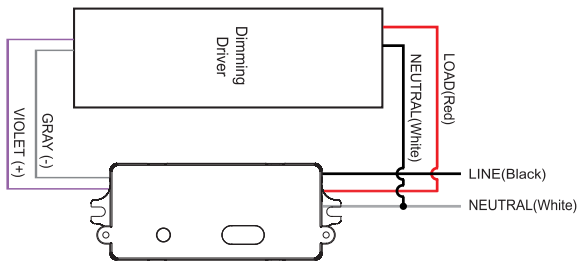
Side View Coverage



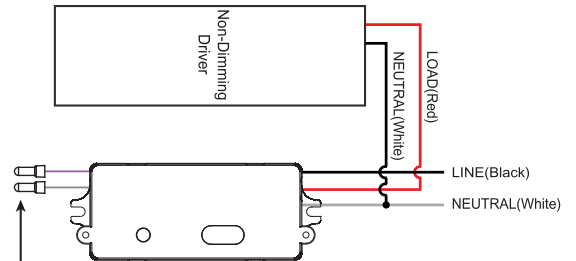
Top View Coverage

### Wiring:

#### 400C wiring with dimming ballast or LED driver



#### 400C wiring with non-dimming ballast or LED driver



Close end wire connector