



LED F313 SERIES

Ti - F313 - 36 Watts



PAGE 1 OF 2

Key Features & Benefits:

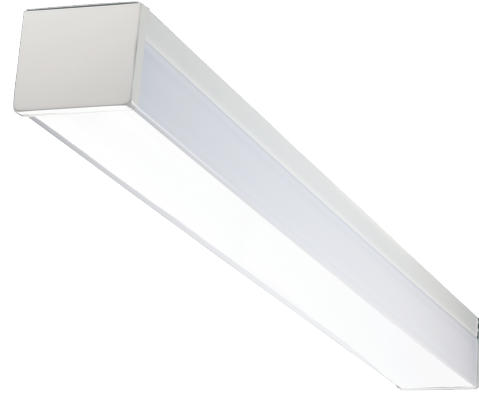
- Glass-Free, Vibration and Impact Resistant
- Optical Grade Polycarbonate Lens Tubes:
 - UV protected
 - Fire retardant
 - Corrosion resistant
- Ideal for Stairwells
- Zero Maintenance
- Die-Formed Heavy Gauge Steel
- Long Life:
 - 10 year warranty (12 hour run times)
 - 7 year warranty (24 hour run times)
- Safe - No Glass to Shatter
- Tamper Resistant Occupancy Sensor
- Emergency Options for Egress Requirements

Project: _____

Date: _____

Catalog #: _____

Notes: _____



Light Specifications:

Lumen Output: Up to 4,294 Lumens
 Efficacy (lm/W): Up to 124 Lumens per Watt
 Kelvin: 3,000K, 3500K, 4000K, 5000K
 Color Rendering Index (CRI): >82
 Rated Life: >80,000 Hours

Driver Data:

Input Voltage: 120-277 VAC
 Input Power: 36W
 Input Current @ 120V: 0.3 Amps
 Input Current @ 240V: 0.15 Amps
 Input Current @ 277V: 0.13 Amps
 THD: <10%
 Power Factor: >0.99
 Operating Temperature: -4 ~ 122°F

Catalog Data:

ITEM#	WATTS	LUMEN OUTPUT	EFFICACY (lm/W)	KELVIN
ESL-Ti-F313-S-36W-F30	36W	4,219	122	3000K
ESL-Ti-F313-S-36W-F35	36W	4,227	122	3500K
ESL-Ti-F313-S-36W-F40	36W	4,257	123	4000K
ESL-Ti-F313-S-36W-F50	36W	4,294	124	5000K

Ordering Guide:

ESL	-	Ti	-	F313	-	S	-	36W	-	F	-		-	
ESL		TYPE		SERIES		CLASS		WATTS		LENS		KELVIN		OPTIONS
		Ti Series		F313		S		26W (26 Watts) 30W (30 Watts) 36W (36 Watts) 44W (44 Watts)		F (Frosted)		30 (3000 Kelvin) 35 (3500 Kelvin) 40 (4000 Kelvin) 50 (5000 Kelvin)		

Example Part Number: ESL-TI-F313-S-36W-F30

Options (Add as Suffix):

ESL-EMG-FDC-30W	Emergency Back Up, DC, 30 Watt
ESL-EMG-2DC-9W	Emergency Back Up, DC, 9 Watt, External Battery
ESL-4OCC-LDD	Photocell/Occupancy Sensor for Standard Mounting, Dip Switch, 0-10v
ESL-REM-100	Hand Held Remote to Program 2OCC-HDD, 3OCC, 4OCC-LDD and 8OCC

Dimensions:

