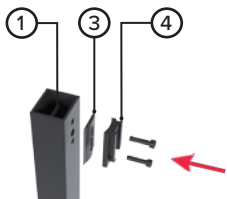


⚠ WARNING

1. To avoid electric shock, disconnect power at source prior to installation.
2. The installation should be performed by qualified electricians or lighting technicians.
3. Before installation, maintenance, or removal; disable all power.
4. Do not touch the fixture while it is in service.
5. If there is any problem with the fixture, turn off power and **DO NOT** attempt repair unless you are a qualified technician or the customer service member.

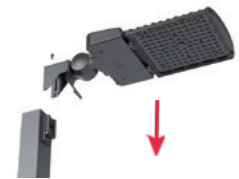
Universal Direct Mount Installation



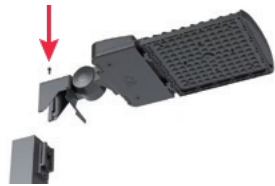
1 Choose the proper mount adapter configuration from Figure 1 (see page 2) and fix the adapter to the pole.



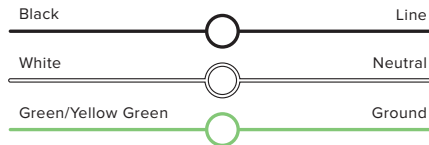
2 Connect the fixture to the Universal Direct Mount with the bolt.



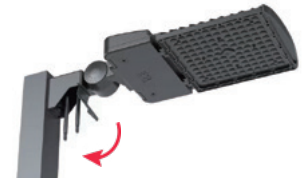
3 Attach the fixture and mount to the pole.



4 Once it is seated properly onto the pole adapter, tighten the top screw on the mount.

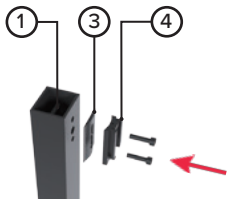


5 The wiring can be accessed by the hinged door on the mount. Make your wiring connections as shown in the wiring diagram (Figure 2).

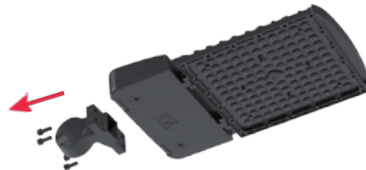


6 After the wiring connections have been made, close the hinged wiring door.

Fixed Universal Direct Mount Installation



1 Choose the proper mount adapter configuration from Figure 1 (see page 2) and fix the adapter to the pole.



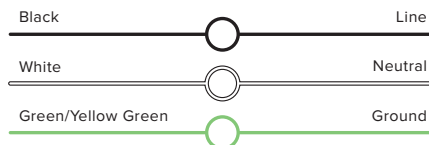
2 Remove the knuckle mount from the fixture.



3 Attach the fixture to the Universal Fixed Direct Mount.



4 Attach the fixture and mount to the pole adapter. Once it is seated properly, tighten the top screw on the mount.



5 The wiring can be accessed by the hinged door on the mount. Make your wiring connections as shown in the wiring diagram (Figure 2).



6 After the wiring connections have been made, close the hinged wiring door.