

### Key Features & Benefits:

- Kelvin Selectable
- On/Off Serviceable Photocell
- 45° Beam Angle Lens
- Quick Mount Plate
- Customizable Light Settings
  - Uplight: 100% Wattage & Lumens
  - Downlight: 100% Wattage & Lumens
  - Bi-Directional: 50% Up and 50% Down

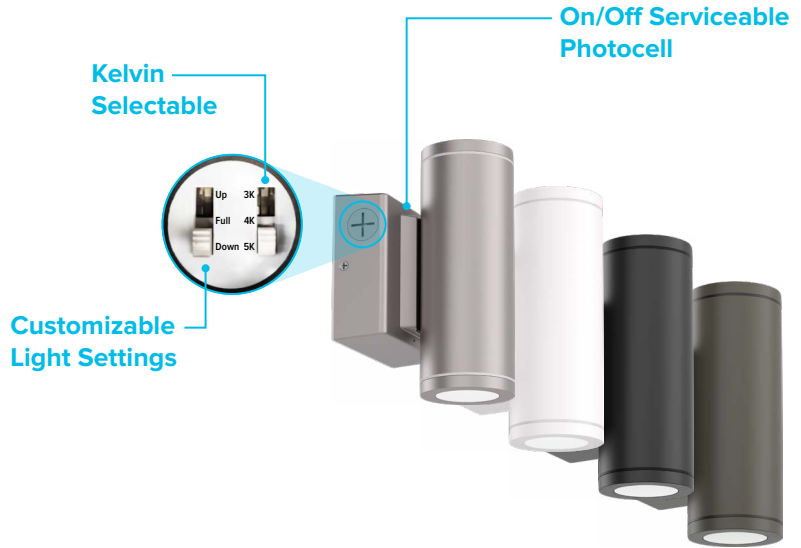
### Product Specifications:

Wattage: 15W  
 Selectable Kelvin: 3000K–4000K–5000K  
 Lumens: Up to 1,667  
 Efficacy: Up to 113 lm/W  
 Input Voltage: 120–277 VAC  
 Input Frequency: 50/60 Hz  
 Operating Temperature: -40°F to 104°F (-40°C to 40°C)  
 CRI: >80  
 Warranty: 7 Years  
 L70 Lifetime 90,000 Hours calculated per TM21  
 Dimensions (ØxWxH): Ø3" x 8" x 5.07"  
 Weight (lbs): 3.48

Project: \_\_\_\_\_ Date: \_\_\_\_\_

Catalog #: \_\_\_\_\_

Notes: \_\_\_\_\_



### Ordering Guide:

ESL	TYPE	SIZE	WATTAGE	GENERATION	SELECTABLE KELVIN	FINISH	MOUNTING
ESL	CYL	R3	15W	1	3050	ff	WM
	(CYL) Wall Mounted Cylinder	(R3) 3" Cylinders	(15W) 15W	(1) 1st Generation	(3050) 3000K–4000K–5000K	(BK) Black (BZ) Bronze (MS) Matte Silver (WH) White	(WM) Wall Mount

### Catalog Data:

ITEM#	WATTAGE	SELECTABLE KELVIN	MAX LUMEN OUTPUT	MAX EFFICACY (lm/w)	DIMENSIONS (ØxWxH)
3" ESL-CYL-15W-13050-ffWM	15W	3000K–4000K–5000K	1,667	113	Ø3" x 8" x 5.07"
4" ESL-CYL-20W-13050-ffWM	20W	3000K–4000K–5000K	2,640	132	Ø4" x 12" x 6.07"
6" ESL-CYL-35W-13050-ffWM	35W	3000K–4000K–5000K	5,075	145	Ø6" x 10" x 8.07"

### Lumen Ambient Temperature (LAT) Multipliers:

AMBIENT	LUMEN MULTIPLIER
0 °C 32 °F	1.02
10 °C 50 °F	1.01
20 °C 68 °F	1.00
25 °C 77 °F	1.00
30 °C 86 °F	1.00
40 °C 104 °F	0.99
50 °C 122 °F	0.96

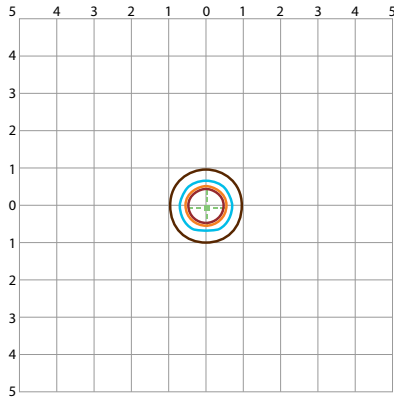
### Photometrics:

#### LEGEND

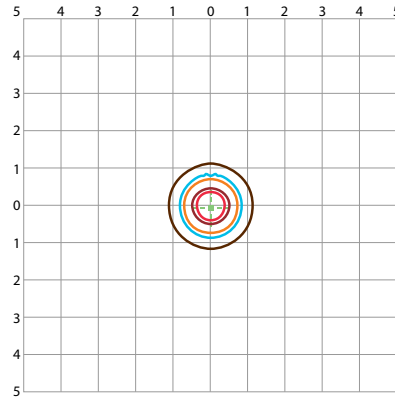
- 20 fc
- 10 fc
- 5 fc
- 1 fc
- 0.5 fc
- 0.1 fc
- 50% Max Cd
- Max Cd

Distances are based on units of 25' mounting height

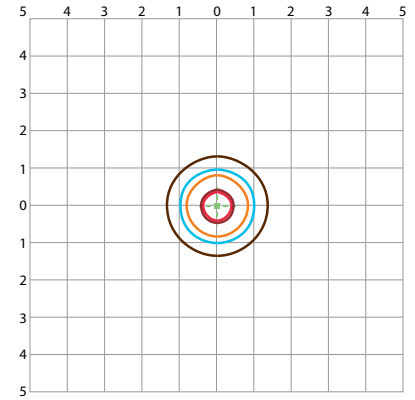
**15W Wall Mounted Cylinder**  
ESL-CYL-R3-15W-13050-ffWM  
(based on 15W and 4000K)



**20W Wall Mounted Cylinder**  
ESL-CYL-R4-25W-13050-ffWM  
(based on 20W and 4000K)



**35W Wall Mounted Cylinder**  
ESL-CYL-R6-35W-13050-ffWM  
(based on 35W and 4000K)



### LCS Table

#### 15W Wall Mounted Cylinder

ESL-CYL-R3-15W-13050-ffWM – BUG Rating: B2–U0–G0  
(based on 15W and 4000K)

	BUG Rating	Lumens	Lumens%
Forward Light	Low (0–30)	594.8	35.7%
	Medium (30-60)	226.9	13.6%
	High (60-80)	5.4	0.3%
	Very High (80-90)	0.4	0%
Back Light	Low (0–30)	594.8	35.7%
	Medium (30-60)	226.9	13.6%
	High (60-80)	5.4	0.3%
	Very High (80-90)	0.4	0%
Uplight	Low (90-100)	0.000	0%
	High (100-180)	5.7	0.3%
Trapped Light		6.6	0.4%

#### 20W Wall Mounted Cylinder

ESL-CYL-R4-25W-13050-ffWM – BUG Rating: B2–U0–G0  
(based on 20W and 4000K)

	BUG Rating	Lumens	Lumens%
Forward Light	Low (0–30)	942.4	35.7%
	Medium (30-60)	359.5	13.6%
	High (60-80)	8.6	0.3%
	Very High (80-90)	0.6	0%
Back Light	Low (0–30)	942.4	35.7%
	Medium (30-60)	359.5	13.6%
	High (60-80)	8.6	0.3%
	Very High (80-90)	0.6	0%
Uplight	Low (90-100)	0.000	0%
	High (100-180)	9.0	0.3%
Trapped Light		10.5	0.4%

#### 35W Wall Mounted Cylinder

ESL-CYL-R6-35W-13050-ffWM – BUG Rating: B3–U2–G0  
(based on 35W and 4000K)

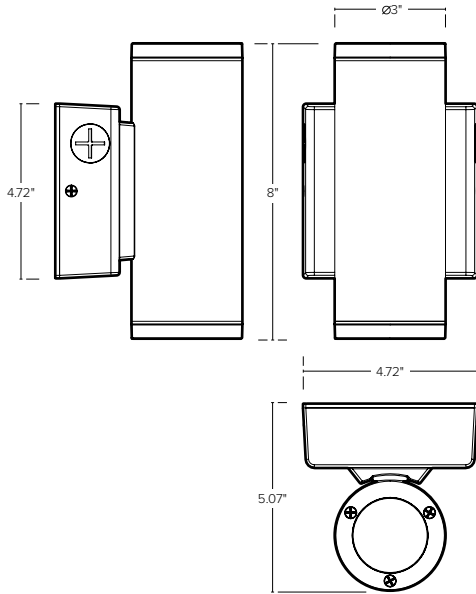
	BUG Rating	Lumens	Lumens%
Forward Light	Low (0–30)	1,564.6	30.8%
	Medium (30-60)	918.4	18.1%
	High (60-80)	34.2	0.7%
	Very High (80-90)	2.0	0%
Back Light	Low (0–30)	1,564.6	30.8%
	Medium (30-60)	918.6	18.1%
	High (60-80)	34.2	0.7%
	Very High (80-90)	2.0	0%
Uplight	Low (90-100)	0.007	0%
	High (100-180)	16.2	0.3%
Trapped Light		20.9	0.4%

### Lumen Ambient Temperature (LAT) Multipliers:

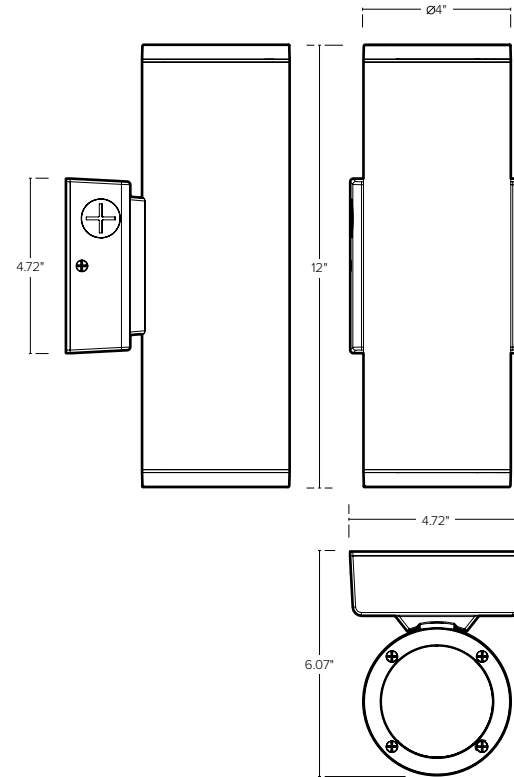
AMBIENT		LUMEN MULTIPLIER
0 °C	32 °F	1.02
10 °C	50 °F	1.01
20 °C	68 °F	1.00
25 °C	77 °F	1.00
30 °C	86 °F	1.00
40 °C	104 °F	0.99
50 °C	122 °F	0.96

**Dimensions:**

**Wall Mounted Cylinders – 3"**  
ESL-CYL-R3-15W-13050-ffWM



**Wall Mounted Cylinders – 4"**  
ESL-CYL-R4-20W-13050-ffWM



**Wall Mounted Cylinders – 6"**  
ESL-CYL-R6-35W-13050-ffWM

