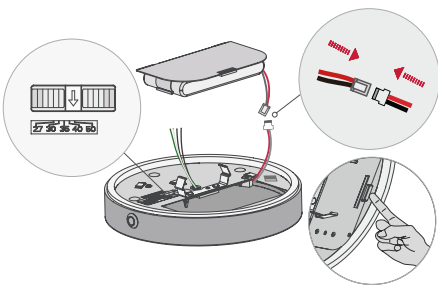


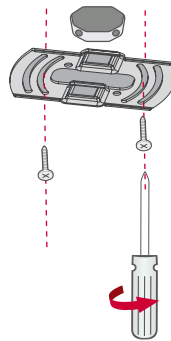
WARNING

1. To avoid electric shock, disconnect power at source prior to installation.
2. The installation should be performed by qualified electricians or lighting technicians.
3. Before conducting any installation, maintenance, or removal, disable all power.
4. Do not touch the fixture while it is in service.
5. If there is any problem with the fixture, turn off power and DO NOT attempt repair unless you are a qualified technician or the customer service member.

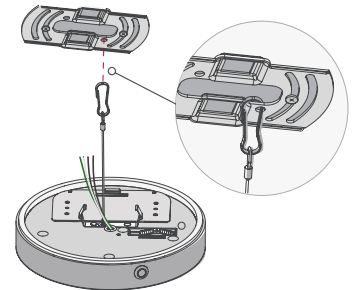
Surface Mounting Installation



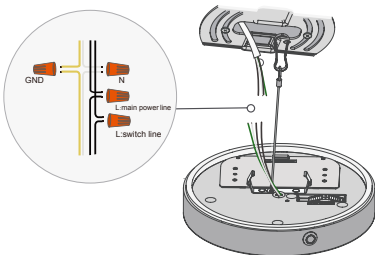
- 1**a) Open the battery hatch using the thumb locks and take out the battery pack. Plug in the battery pack. Replace the battery pack and push to close.
b) Select desired kelvin.



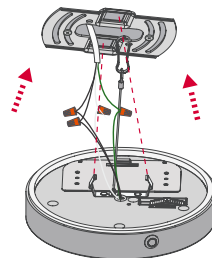
- 2** Attach the bracket onto the junction box with the screws provided.



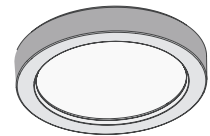
- 3** Attach steel safety wire onto bracket.



- 4** Wire in accordance to the wiring diagram. (See below)

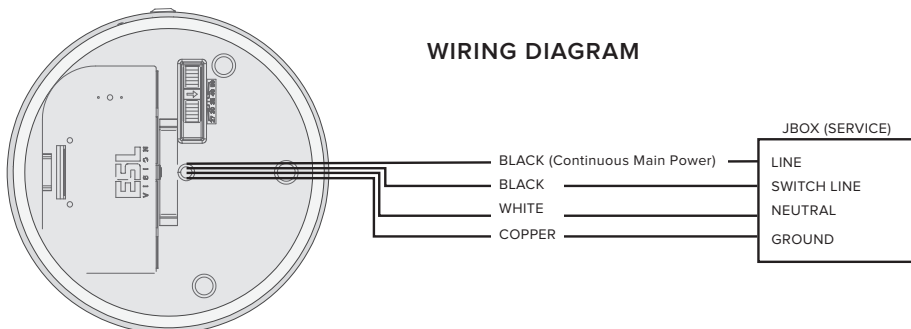


- 5** Align the spring with the bracket holes and press into place.



- 6** Ensure that the fixture is flush with the surface to complete the installation. For use in wet location please caulk edges of the fixture to create a seal with ceiling.

WIRING DIAGRAM



BATTERY INDICATOR LIGHT

Slow Flashing Light	— Battery Charging
No Indicator Light	— Battery Fully Charged
Solid Light	— Emergency Mode
Fast Flashing Light	— Fixture Error