

Project:

Date:

Catalog #:

Notes:



ESL-WMB

Wall Mount Bracket

Steel bracket designed to mount onto walls, rooftops or the ground. The bracket provides a 2-3/8" (60mm) O.D. tenon to mount a luminaire. The 1/4" (6mm) thick steel back plate provides wiring access and a 3/8" (9mm) diameter bolt is recommended to mount on to the wall. Bronze finish 4.01" x 4.17" 1.76 lbs



ESL-WMB90

Wall Mount 90° Bracket

Steel bracket designed to mount onto walls, rooftops or poles. The bracket provides a 2-3/8" (60mm) O.D. tenon to mount a luminaire. The 1/4" (6mm) thick steel back plate provides wiring access and a 3/8" (9mm) diameter bolt is recommended to mount on to the wall. Bronze finish 9.16" x 7.05" x 4.01" 3.97 lbs



ESL-4SSVT

4" Single Square Vertical Tenon

4" square, steel base vertical tenon, designed to be inserted into a 4" square, non-tapered steel or aluminum pole with a maximum wall thickness of 0.188" (5mm). Secures to pole with four 5/16" (8mm) head bolts. Luminaires mounted to tenon can be adjusted vertically and horizontally. Bronze finish. 4.01" x 6.69" 4.41lbs



ESL-5SSVT

5" Single Square Vertical Tenon

5" square, steel base vertical tenon, designed to be inserted into a 5" square, non-tapered steel or aluminum pole with a maximum wall thickness of 0.188" (5mm). Secures to pole with four 5/16" (8mm) head bolts. Luminaires mounted to tenon can be adjusted vertically and horizontally. Bronze finish. 5" x 6.69" 5.29lbs



ESL-4TWSHT90

4" 90° Twin Square Horizontal Tenon

4" square, steel base horizontal tenon, designed to be inserted into a 4" square, non-tapered steel or aluminum pole with a maximum wall thickness of 0.188" (5mm). Tenon base secures the pole with 4 5/16" (8mm) hex head bolts. Luminaires mounted to this tenon can only be adjusted vertically Bronze finish. 8.14" x 8.14" 7.28lbs



ESL-5TWSHT90

5" 90° Twin Square Horizontal Tenon

5" square, steel base horizontal tenon, designed to be inserted into a 5" square, non-tapered steel or aluminum pole with a maximum wall thickness of 0.188" (5mm). Tenon base secures the pole with 4 5/16" (8mm) hex head bolts. Luminaires mounted to this tenon can only be adjusted vertically Bronze finish. 9.13" x 8.14" 8.82lbs



ESL-4TWSHT180

4" 180° Twin Square Horizontal Tenon

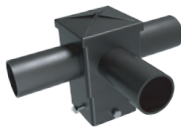
4" square, steel base horizontal tenon, designed to be inserted into a 4" square, non-tapered steel or aluminum pole with a maximum wall thickness of 0.188" (5mm). Tenon base secures the pole with 4 5/16" (8mm) hex head bolts. Luminaires mounted to this tenon can only be adjusted vertically Bronze finish. 11.89" x 2.36" 7.28lbs



ESL-5TWSHT180

5" 180° Twin Square Horizontal Tenon

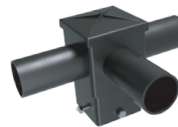
5" square, steel base horizontal tenon, designed to be inserted into a 5" square, non-tapered steel or aluminum pole with a maximum wall thickness of 0.188" (5mm). Tenon base secures the pole with 4 5/16" (8mm) hex head bolts. Luminaires mounted to this tenon can only be adjusted vertically Bronze finish. 13.89" x 2.36" 8.82lbs



ESL-4TRSHT90

4" 90° Triple Square Horizontal Tenon

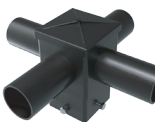
4" square, steel base horizontal tenon, designed to be inserted into a 4" square, non-tapered steel or aluminum pole with a maximum wall thickness of 0.188" (5mm). Tenon base secures the pole with 4 5/16" (8mm) hex head bolts. Luminaires mounted to this tenon can only be adjusted vertically Bronze finish. 11.89" x 2.36" 7.05lbs



ESL-5QSHT90

5" 90° Triple Square Horizontal Tenon

5" square, steel base horizontal tenon, designed to be inserted into a 5" square, non-tapered steel or aluminum pole with a maximum wall thickness of 0.188" (5mm). Tenon base secures the pole with 4 5/16" (8mm) hex head bolts. Luminaires mounted to this tenon can only be adjusted vertically Bronze finish. 13.07" x 7.05" 11.02lbs



ESL-4QSHT90

4" 90° Quad Square Horizontal Tenon

4" square, steel base horizontal tenon, designed to be inserted into a 4" square, non-tapered steel or aluminum pole with a maximum wall thickness of 0.188" (5mm). Tenon base secures the pole with 4 5/16" (8mm) hex head bolts. Luminaires mounted to this tenon can only be adjusted vertically Bronze finish. 11.89" x 7.05" 7.05lbs



ESL-5TRSHT90

5" 90° Quad Square Horizontal Tenon

5" square, steel base horizontal tenon, designed to be inserted into a 5" square, non-tapered steel or aluminum pole with a maximum wall thickness of 0.188" (5mm). Tenon base secures the pole with 4 5/16" (8mm) hex head bolts. Luminaires mounted to this tenon can only be adjusted vertically Bronze finish. 13.07" x 7.05" 11.02lbs



Project:

Date:

Catalog #:

Notes:



ESL-4TRILT

4" Triple In-line Tenon

Steel bracket designed to mount onto walls, rooftops or the ground. The bracket provides a 2-3/8" (60mm) O.D. tenon to mount a luminair. The 1/4" (6mm) thick steel back plate provides wiring access and a 3/8" (9mm) diameter bolt is recommended to mount on to the wall. Bronze finish 4.01" x 4.17" 1.76 lbs



ESL-5TRILT

5" Triple In-line Tenon

Steel bracket designed to mount onto walls, rooftops or poles. The bracket provides a 2-3/8" (60mm) O.D. tenon to mount a luminair. The 1/4" (6mm) thick steel back plate provides wiring access and a 3/8" (9mm) diameter bolt is recommended to mount on to the wall. Bronze finish 9.16" x 7.05" x 4.01" 3.97 lbs



ESL-4DILT180

4" 180° Triple In-line Tenon

4" square, steel base vertical tenon, designed to be inserted into a 4" square, non-tapered steel or aluminum pole with a maximum wall thickness of 0.188" (5mm). Secures to pole with four 5/16" (8mm) head bolts. Luminaires mounted to tenon can be adjusted vertically and horizontally. Bronze finish. 4.01" x 6.69" 4.41lbs



ESL-5DILT180

5" 180° Triple In-line Tenon

5" square, steel base vertical tenon, designed to be inserted into a 5" square, non-tapered steel or aluminum pole with a maximum wall thickness of 0.188" (5mm). Secures to pole with four 5/16" (8mm) head bolts. Luminaires mounted to tenon can be adjusted vertically and horizontally. Bronze finish. 5" x 6.69" 5.29lbs



ESL-4TRILT180

4" 180° Triple In-line Tenon

4" square, steel base horizontal tenon, designed to be inserted into a 4" square, non-tapered steel or aluminum pole with a maximum wall thickness of 0.188" (5mm). Tenon base secures the pole with 4 5/16" (8mm) hex head bolts. Luminaires mounted to this tenon can only be adjusted vertically Bronze finish. 8.14" x 8.14" 7.28lbs



ESL-5TRILT180

5" 180° Triple In-line Tenon

5" square, steel base horizontal tenon, designed to be inserted into a 5" square, non-tapered steel or aluminum pole with a maximum wall thickness of 0.188" (5mm). Tenon base secures the pole with 4 5/16" (8mm) hex head bolts. Luminaires mounted to this tenon can only be adjusted vertically Bronze finish. 9.13" x 8.14" 8.82lbs



ESL-4TWSVT

4" Twin Square Vertical Tenon

4" square, steel base horizontal tenon, designed to be inserted into a 4" square, non-tapered steel or aluminum pole with a maximum wall thickness of 0.188" (5mm). Tenon base secures the pole with 4 5/16" (8mm) hex head bolts. Luminaires mounted to this tenon can only be adjusted vertically Bronze finish. 11.89" x 2.36" 7.28lbs



ESL-5TWSVT

5" Twin Square Vertical Tenon

5" square, steel base horizontal tenon, designed to be inserted into a 5" square, non-tapered steel or aluminum pole with a maximum wall thickness of 0.188" (5mm). Tenon base secures the pole with 4 5/16" (8mm) hex head bolts. Luminaires mounted to this tenon can only be adjusted vertically Bronze finish. 13.89" x 2.36" 8.82lbs



ESL-4TRSVT

4" Triple Square Vertical Tenon

4" square, steel base horizontal tenon, designed to be inserted into a 4" square, non-tapered steel or aluminum pole with a maximum wall thickness of 0.188" (5mm). Tenon base secures the pole with 4 5/16" (8mm) hex head bolts. Luminaires mounted to this tenon can only be adjusted vertically Bronze finish. 11.89" x 2.36" 7.05lbs



ESL-5TRSVT

5" Triple Square Vertical Tenon

5" square, steel base horizontal tenon, designed to be inserted into a 5" square, non-tapered steel or aluminum pole with a maximum wall thickness of 0.188" (5mm). Tenon base secures the pole with 4 5/16" (8mm) hex head bolts. Luminaires mounted to this tenon can only be adjusted vertically Bronze finish. 13.07" x 7.05" 11.02lbs



ESL-4QSVT90

4" 90° Quad Square Vertical Tenon.

4" square, steel base horizontal tenon, designed to be inserted into a 4" square, non-tapered steel or aluminum pole with a maximum wall thickness of 0.188" (5mm). Tenon base secures the pole with 4 5/16" (8mm) hex head bolts. Luminaires mounted to this tenon can only be adjusted vertically Bronze finish. 11.89" x 7.05" 7.05lbs



ESL-5QSVT90

5" 90° Quad Square Vertical Tenon

5" square, steel base horizontal tenon, designed to be inserted into a 5" square, non-tapered steel or aluminum pole with a maximum wall thickness of 0.188" (5mm). Tenon base secures the pole with 4 5/16" (8mm) hex head bolts. Luminaires mounted to this tenon can only be adjusted vertically Bronze finish. 13.07" x 7.05" 11.02lbs

