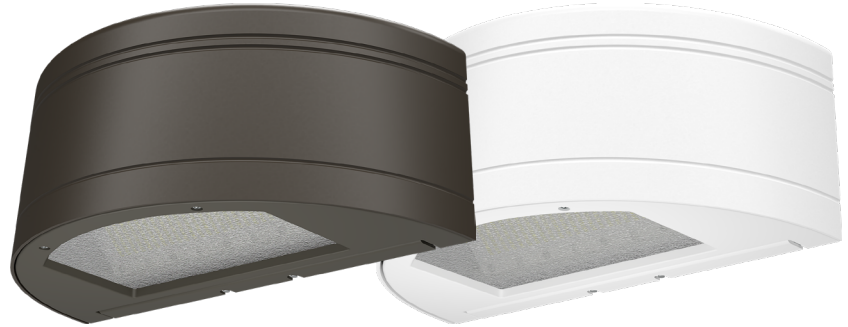


Key Features & Benefits:

- Customizable Light Settings:
 - Uplight
 - Downlight
 - Bi-Directional
- Kelvin and Wattage Selectable
- Built-In Patent-Pending Replaceable Photocell
- Quick-Mount Plate and Built-in Level
- Visual Comfort Lens
- 10kV Surge Protector
- Available in Bronze and White Finishes

Product Specifications:

Selectable Wattage: 25W–45W–65W
 Selectable Kelvin: 3000K–4000K–5000K
 Lumens:
 – Uplight: Up to 1,700 Max Lumens
 – Downlight: Up to 6,500 Max Lumens
 – Bi-Directional: Up to 9,100 Max Lumens
 Efficacy: Up to 140 lm/W
 Input Voltage: 120–277 VAC
 Input Frequency: 50/60 Hz
 Operating Temperature: -40°F to 104°F (-40°C to 40°C)
 Dimming: 0–10V
 CRI: >70
 Warranty: 7 Years
 L70 Lifetime 90,000 Hours calculated per TM21
 Dimensions (LxWxH): 18.1" x 9.25" x 7.1"
 Weight (lbs): 12.35



Ordering Guide:

ESL	TYPE	SELECTABLE WATTAGE	GENERATION	SELECTABLE KELVIN	FINISH	OPTIONS
ESL	WPHM <small>(WPHM) Half-Moon Wallpack</small>	2565W <small>(2565W) 25W–45W–65W</small>	1 <small>(1) 1st Generation</small>	3050 <small>(3050) 3000K–4000K–5000K</small>	ff <small>(BZ) Bronze (WH) White</small>	

FACTORY INSTALLED OPTIONS

EM9	Emergency Backup Battery Unit, Auto Test Function, 9 Watts Output, 90 Minutes Minimum, 120–277 VAC Input, 10–300 VDC Output, Open Terminal Block Wiring, UL Listed for Factory or Field Install, Title 20
-----	---

Catalog Data:

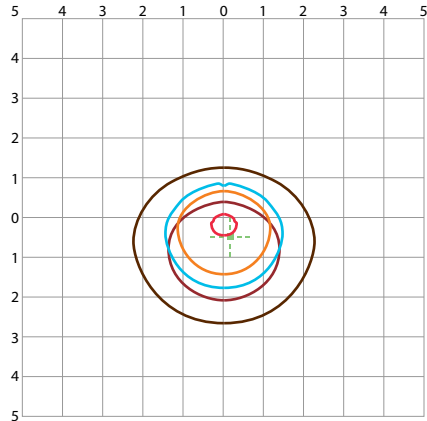
ITEM#	SELECTABLE WATTAGE	SELECTABLE KELVIN	MAX LUMEN OUTPUT	MAX EFFICACY (lm/w)	DIMENSIONS (LxWxH)
ESL-WPHM-2565W-13050-BZ	25W–45W–65W	3000K–4000K–5000K	9,100	124	9.25" x 18.1" x 7.1"
ESL-WPHM-2565W-13050-WH	25W–45W–65W	3000K–4000K–5000K	9,100	124	9.25" x 18.1" x 7.1"

Photometrics:

LEGEND

- 20 fc
 - 10 fc
 - 5 fc
 - 1 fc
 - 0.5 fc
 - 0.1 fc
 - 50% Max Cd
 - Max Cd
- Distances are based on units of 25' mounting height

Half-Moon Wall Pack
ESL-WPHM-2565W-13050-ff
(based on 65W and 4000K)



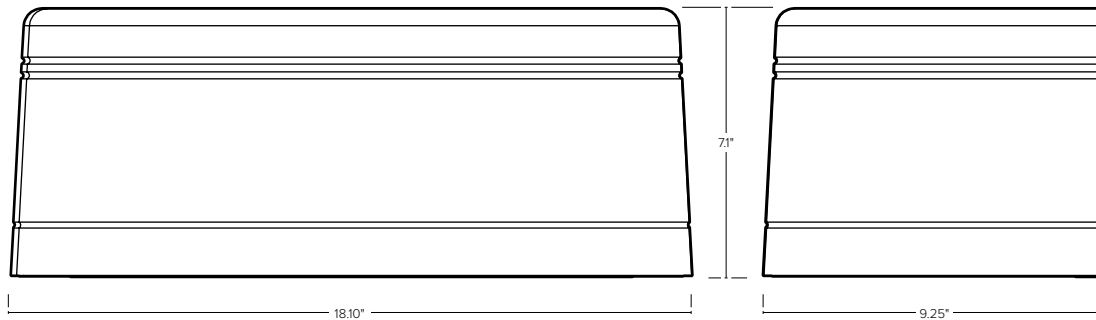
LCS Table

Half-Moon Wall Pack
ESL-WPHM-2565W-13050-ff – BUG Rating: B3–U2–G1
(based on 65W and 4000K)

	BUG Rating	Lumens	Lumens%
Forward Light	Low (0–30)	1,556.6	18.2%
	Medium (30-60)	3,408.1	39.8%
	High (60-80)	1,104.1	12.9%
	Very High (80-90)	76.2	0.9%
Back Light	Low (0–30)	1,063.2	12.4%
	Medium (30-60)	1,101.6	12.9%
	High (60-80)	188.4	2.2%
	Very High (80-90)	20.9	0.2%
Uplight	Low (90-100)	11.5	0.1%
	High (100-180)	29.1	0.3%
Trapped Light		8.0	0.1%

Dimensions:

Half-Moon Wall Pack
ESL-WPHM-2565W-13050-ff



Lumen Ambient Temperature (LAT) Multipliers:

AMBIENT		LUMEN MULTIPLIER
0 °C	32 °F	1.02
10 °C	50 °F	1.01
20 °C	68 °F	1.00
25 °C	77 °F	1.00
30 °C	86 °F	1.00
40 °C	104 °F	0.99
50 °C	122 °F	0.96