

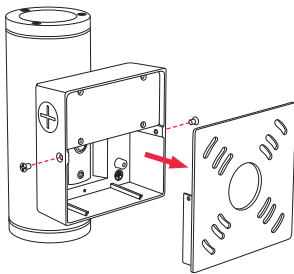
### ⚠ WARNING

1. To avoid electric shock, disconnect power at source prior to installation.
2. The installation should be performed by qualified electricians or lighting technicians.
3. Before installation, maintenance, or removal, disable all power.
4. Do not touch the fixture while it is in service.
5. If there is any problem with the fixture, turn off power and **DO NOT** attempt repair unless you are a qualified technician or the customer service member.

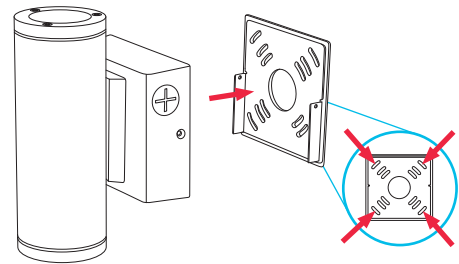
## Wall Mount Installation

**Tools Needed:** Phillips Head Screwdriver  
Drill with Assorted Bits

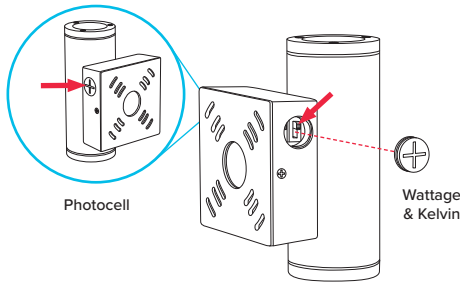
Wire Cutters  
Wire Strippers



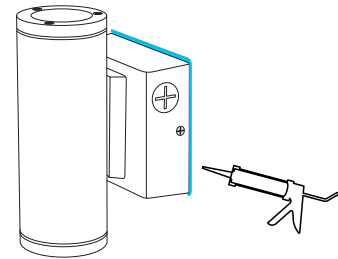
**1** Remove the two set screws and save for later use, then separate the junction box bracket.



**2** Mount the junction box bracket. Wire the fixture according to the Wiring Diagram below. Place the fixture on the bracket, replace the set screws and secure.



**3** Remove the side access plugs to access the Wattage and Kelvin dip switches, and the integrated photocell. Slide each switch to the desired setting and replace the plug securely.



**4** Seal the fixture where it contacts the mounting surface with a silicone sealant. Turn the supply power on and test the fixture to ensure that it functions properly.

## Wiring Diagram

