

Overview:

The ESL Vision ESL-ISS-MSEN-07 is a network-capable, high bay PIR sensor and controller. It comes Bluetooth enabled for reliable and secure wireless communication.

Project: _____

Date: _____

Catalog #: _____

Notes: _____

Key Features & Benefits:

- PIR Occupancy Sensing
- Daylight Harvesting
- Bluetooth Network Lighting Controls



Product Specifications:

INPUT

Input Voltage: 120-277 VDC
 Dimming: Class 2, 0–10 VDC, 10mA Max
 Sinking Current: 10mA Max

OUTPUT

Output Current: 10mA Max @ 120V
 Output Power: 1200W

ENVIRONMENT

Housing Material: UL 94-5VA
 Detection Range: 40-80 Feet Max
 Mounting Height: 20-40 Feet Max
 Bluetooth Transmit Range: 200 Feet Max
 Radio Frequency: 2.4GHz ± 75MHz
 Operating Temperature: -22°F to 131°F (-30°C to 55°C)
 Storage Temperature: -22°F to 185°F (-30°C to 85°C)
 IP Rating: IP40

CERTIFICATIONS

Compliance: UL8750
 Bluetooth Version: 4.2
 Warranty: 5 Years



Ordering Guide:

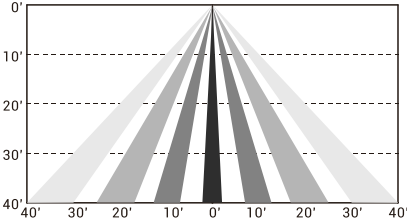
ESL	FAMILY	TYPE	MODEL
ESL	ISS <small>(ISS) IntelliSense™ Series</small>	MSEN <small>(MSEN) MultiSense™</small>	07 <small>(07) Fixture Sensor</small>

Catalog Data:

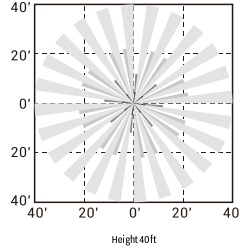
ITEM #	DESCRIPTION
ESL-ISS-MSEN-07	MultiSense™ – AC High Bay PIR Sensor

Coverage:

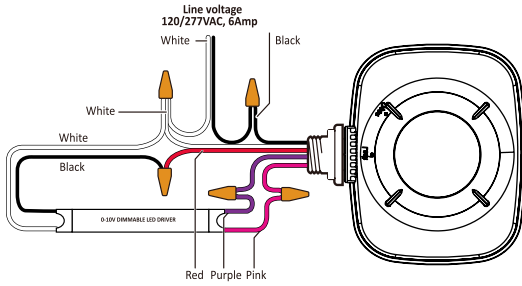
Coverage Side View



Coverage Top View



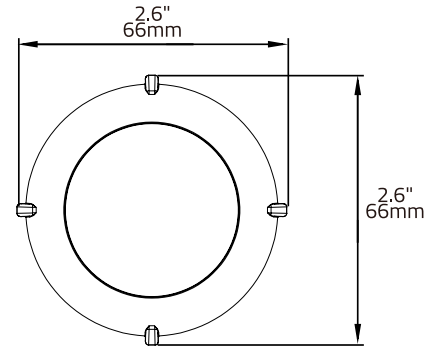
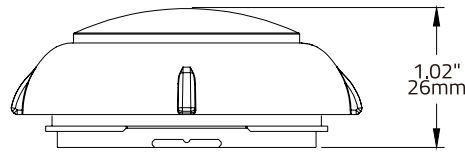
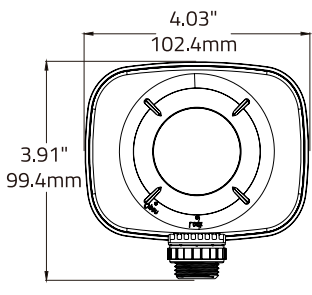
Wiring Diagram:



Dimensions:

IntelliSense™ Sensor

ESL-ISS-MSEN-07 and ESL-ACCS-ISS-LENS-01



IntelliSense™ Sensor

ESL-ISS-MSEN-07 Accessories

