

### Key Features & Benefits:

- Wattage, Kelvin & Beam Angle Selectable
- DLC Premium Listed
- Damp Location
- 0–10V Dim to Off
- IntelliSense™ Quick Connect for Network Controls or Stand Alone Remote Control
- Comes with V-hooks and 3ft of Chain for Standard Mounting
- IK10 Impact Resistance Provides Maximum Mechanical Protection, Ensuring Long Term Durability in Demanding Environments.

Project: \_\_\_\_\_

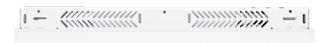
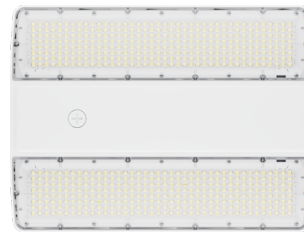
Date: \_\_\_\_\_

Catalog #: \_\_\_\_\_

Notes: \_\_\_\_\_

### Product Specifications:

Selectable Wattage: 85W–105W–130W  
 Selectable Kelvin: 4000K–5000K–5700K  
 Selectable Beam Angle: 90x90°–45x100°–65x95°  
 Lumens: Up to 20,000  
 Efficacy: Up to 170 lm/W  
 Input Voltage: 120–347 VAC  
 Input Frequency: 50/60 Hz  
 Operating Temperature: -40°F to 122°F (-40°C to 50°C)  
 Dimming: 0–10V Dim to Off  
 CRI: >80  
 Warranty: 5 Years  
 L70 Lifetime: 200,000 hrs Calculated per TM21  
 Dimensions: 15.00" x 11.22" x 1.89"  
 Weight (lbs): 5.51  
 Default Settings: 130W, 5000K & 90x90° Beam Angle



### Ordering Guide:

ESL	FAMILY	SELECTABLE WATTAGE	GENERATION	SELECTABLE KELVIN	VOLTAGE	OPTIONS
ESL	LHB <small>(LHB) Linear High Bay</small>	85130W <small>(85130W) 85W–105W–130W (105165W) 105W–130W–165W (165240W) 165W–215W–240W (255320W) 255W–295W–320W</small>	5 <small>(5) 5th Generation</small>	4057 <small>(4057) 4000K–5000K–5700K</small>	(Blank) Standard	See Options Table on pg 2

### FACTORY INSTALLED OPTIONS

EM18*	Emergency Backup Battery Unit, Auto Test Function, 18 Watt Output, 90 Minutes, 100–347 VAC Input, 170 VDC Output, Enclosed Box, UL Listed for Factory or Field install, Lithium Battery
EM25*	Emergency Backup Battery Unit, Auto Test Function, 25 Watt Output, 90 Minutes, 100–347 VAC Input, 170 VDC Output, Enclosed Box, UL Listed for Factory or Field install, Lithium Battery
EM40*	Emergency Backup Battery Unit, Auto Test Function, 40 Watt Output, 90 Minutes, 100–347 VAC Input, 170 VDC Output, Enclosed Box, UL Listed for Factory or Field install, Lithium Battery
CS3W6W	Cord Set, 3 Conductor, 18 Gauge, White, 6-Foot Length, Whip End
CS3B6W	Cord Set, 3 Conductor, 18 Gauge, Black, 6-Foot Length, Whip End
CS3W6P	Cord Set, 3 Conductor, 18 Gauge, White, 6-Foot Length, Straight Blade Plug
CS3B6P	Cord Set, 3 Conductor, 18 Gauge, Black, 6-Foot Length, Straight Blade Plug
CS3B6TL5	Cord Set, 3 Conductor, 18 Gauge, Black, 6-Foot Length, Twist Lock, NEMA L5–15 (120V)
CS3B6TL6	Cord Set, 3 Conductor, 18 Gauge, Black, 6-Foot Length, Twist Lock, NEMA L6–15 (240V)
CS3B6TL7	Cord Set, 3 Conductor, 18 Gauge, Black, 6-Foot Length, Twist Lock, NEMA L7–15 (277V)

### FIELD INSTALLED ACCESSORIES

ESL-ISS-MSEN-03	Network PIR + Daylight Sensor for LHB5
ESL-OCCP-LV-01	PIR Occupancy
ESL-REM100	Occupancy Sensor Remote
ESL-LHB5-PM	LHB5 Pendant Mount
ESL-LHB5-SM	LHB5 Surface Mount
ESL-LHB5-WG-S	LHB5 Wire Guard for 85130W and 105165W
ESL-LHB5-WG-M	LHB5 Wire Guard for 165240W
ESL-LHB5-WG-L	LHB5 Wire Guard for 255320W
ESL-ACCS-AC-10FT-S2-02	Aircraft Cable 10 Feet Set of 2

\*Not Compatible with High Voltage Fixtures

### Catalog Data:

ITEM#	SELECTABLE WATTAGE	SELECTABLE KELVIN	MAX LUMEN OUTPUT	MAX EFFICACY (lm/w)	DIMENSIONS (LxWxH)
ESL-LHB-85130W-54057	85W–105W–130W	4000K–5000K–5700K	20,000	170	11.22" x 15.00" x 1.89"
ESL-LHB-105165W-54057	105W–130W–165W	4000K–5000K–5700K	26,000	170	11.22" x 15.00" x 1.89"
ESL-LHB-165240W-54057	165W–215W–240W	4000K–5000K–5700K	36,800	170	11.22" x 20.08" x 1.89"
ESL-LHB-255320W-54057	255W–295W–320W	4000K–5000K–5700K	51,000	170	12.40" x 22.05" x 1.89"
ESL-LHB-165240W-54057-HV	165W–215W–240W	4000K–5000K–5700K	36,700	170	11.22" x 20.08" x 1.89"
ESL-LHB-255320W-54057-HV	255W–295W–320W	4000K–5000K–5700K	51,100	170	12.40" x 22.05" x 1.89"

### Electrical Load — Standard Voltage:

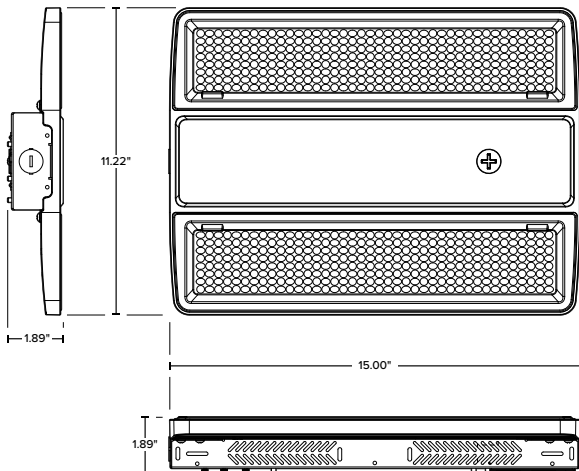
SYSTEM WATTS	INPUT CURRENT				INPUT VOLTAGE	INPUT FREQUENCY	POWER FACTOR	THD	OPERATING TEMPERATURE	SURGE PROTECTION	DIMMING
	120 VAC	208 VAC	240 VAC	277 VAC							
85	0.71	0.41	0.35	0.31	120–347 VAC	50/60 Hz	>0.9	<20%	-40°F to 122°F (-40°C to 50°C)	6kV	0–10V Dim to Off
105	0.88	0.50	0.44	0.38			>0.9				
130	1.08	0.63	0.54	0.47			>0.10				
165	1.38	0.79	0.69	0.60			>0.11				
215	1.79	1.03	0.90	0.78			>0.12				
240	2.00	1.15	1.00	0.87			>0.13				
255	2.13	1.23	1.06	0.92			>0.14				
295	2.46	1.42	1.23	1.06			>0.15				
320	2.67	1.54	1.33	1.16	>0.16						

### Electrical Load — High Voltage:

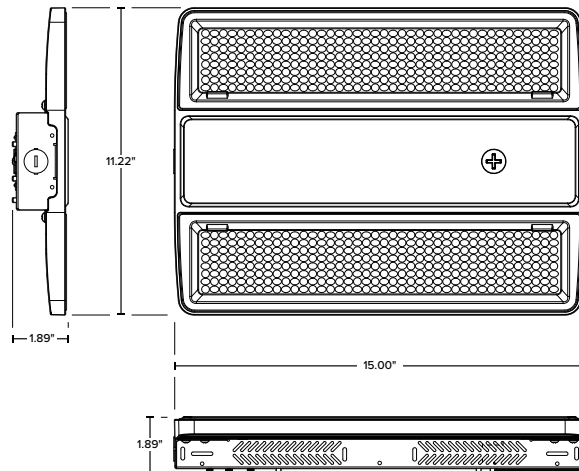
SYSTEM WATTS	INPUT CURRENT			INPUT VOLTAGE	INPUT FREQUENCY	POWER FACTOR	THD	OPERATING TEMPERATURE	SURGE PROTECTION	DIMMING
	277 VAC	347 VAC	480 VAC							
165	0.60	0.48	0.34	277-480 VAC	50/60 Hz	>0.11	<20%	-40°F to 122°F (-40°C to 50°C)	6kV	0-10V Dim to Off
215	0.78	0.62	0.45			>0.12				
240	0.87	0.69	0.50			>0.13				
255	0.92	0.73	0.53			>0.14				
295	1.06	0.85	0.61			>0.15				
320	1.16	0.92	0.67			>0.16				

### Dimensions:

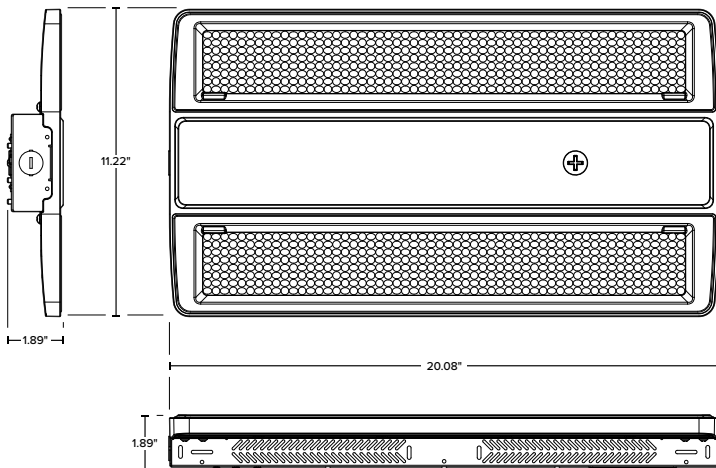
**ESL-LHB-85130W-54057**



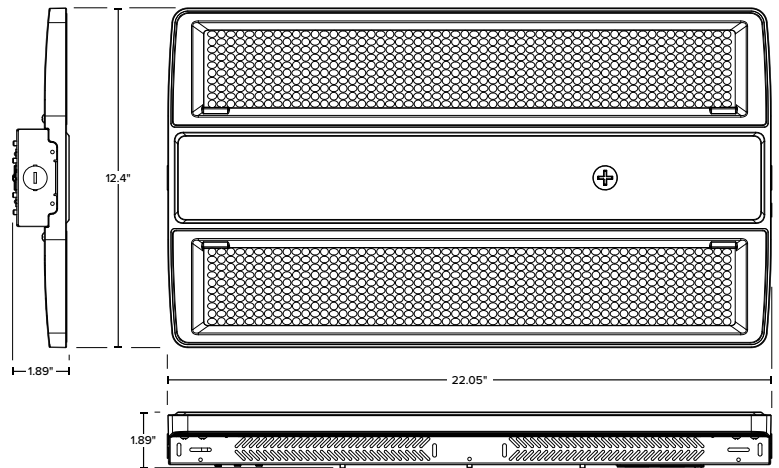
**ESL-LHB-105165W-54057**



**ESL-LHB-165240W-54057 & ESL-LHB-165240W-54057-HV**



**ESL-LHB-255320W-54057 & ESL-LHB-255320W-54057-HV**

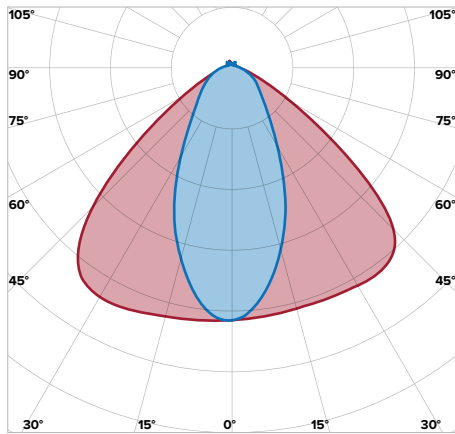


**Beam Angle Diagrams:**

**NARROW AISLE BEAM**

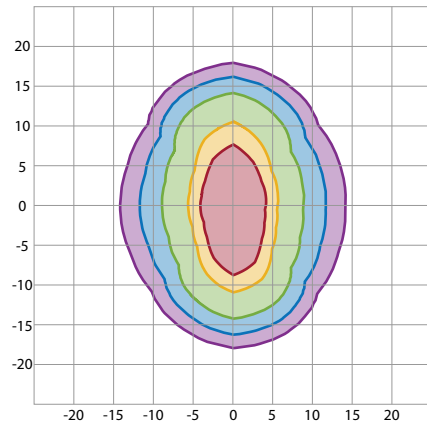
Beam Angle  
45° x 100°

**Polar Candela Distribution**



- 0°–180° Plane
- 90°–270° Plane

**Isocandela Diagram**

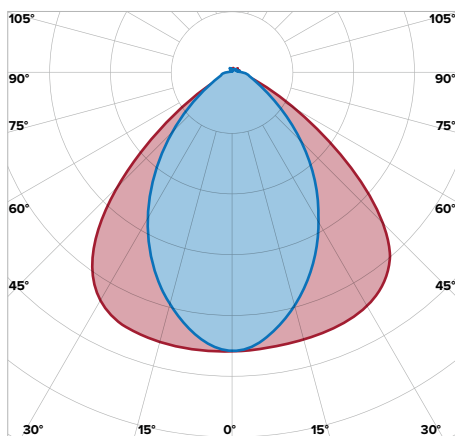


- 50%
- 30%
- 10%
- 5%
- 3%

**aisle beam**

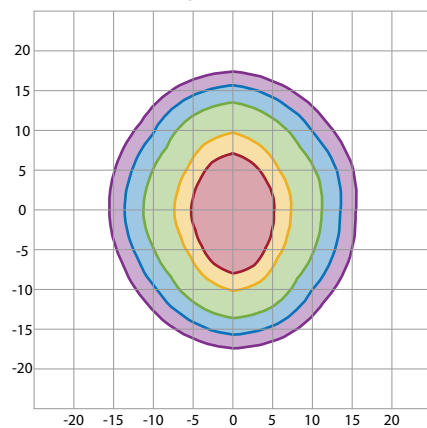
Beam Angle  
70° x 100°

**Polar Candela Distribution**



- 0°–180° Plane
- 90°–270° Plane

**Isocandela Diagram**

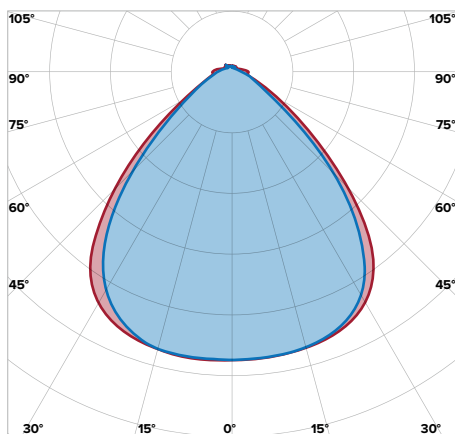


- 50%
- 30%
- 10%
- 5%
- 3%

**STANDARD BEAM**

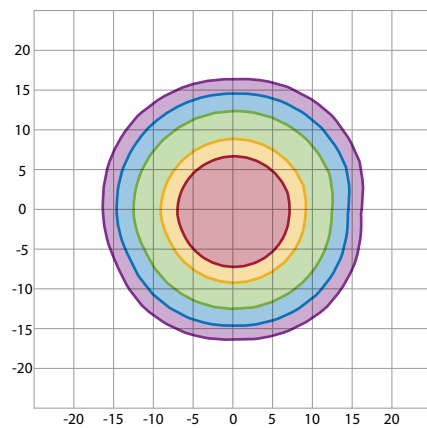
Beam Angle  
90° x 90°

**Polar Candela Distribution**



- 0°–180° Plane
- 90°–270° Plane

**Isocandela Diagram**



- 50%
- 30%
- 10%
- 5%
- 3%

### Lumen Ambient Temperature (LAT) Multipliers:

AMBIENT		LUMEN MULTIPLIER
0 °C	32 °F	1.02
10 °C	50 °F	1.01
20 °C	68 °F	1.00
25 °C	77 °F	1.00
30 °C	86 °F	1.00
40 °C	104 °F	0.99
50 °C	122 °F	0.96

### Standard Voltage Lumen Data Breakdown:

ITEM#	SELECTABLE WATTAGE	SELECTABLE KELVIN	SELECTABLE BEAM ANGLE	EFFICACY (lm/w)	LUMEN OUTPUT	WATTAGE
ESL-LHB-85130W-54057	85W	4000K	90x90°	151	12986	86
			45x100°	146	12368	85
			65x95°	161	13212	82
		5000K	90x90°	159	13824	87
			45x100°	154	13076	85
			65x95°	170	13933	82
		5700K	90x90°	151	12986	86
			45x100°	146	12369	85
			65x95°	161	13212	82
	105W	4000K	90x90°	146	15665	107
			45x100°	140	14800	106
			65x95°	155	15676	101
		5000K	90x90°	155	16443	106
			45x100°	150	15702	105
			65x95°	166	16616	100
		5700K	90x90°	148	15701	106
			45x100°	142	14869	105
			65x95°	156	15753	101
	130W	4000K	90x90°	139	18820	135
			45x100°	134	17895	134
			65x95°	153	19400	127
		5000K	90x90°	151	19693	130
			45x100°	145	18365	127
			65x95°	163	20019	123
5700K		90x90°	144	18807	131	
		45x100°	138	18287	133	
		65x95°	155	19522	126	
ESL-LHB-105165W-54057	105W	4000K	90x90°	151	16191	107
			45x100°	145	15402	106
			65x95°	155	15617	101
	5000K	90x90°	160	17117	107	
		45x100°	155	16233	105	
		65x95°	172	17200	100	
	5700K	90x90°	156	16700	107	
		45x100°	152	16144	106	
		65x95°	165	16471	100	
130W	4000K	90x90°	147	19546	133	
		45x100°	140	18814	134	
		65x95°	154	20154	131	
	5000K	90x90°	156	20693	133	
		45x100°	153	20223	132	
		65x95°	169	21399	127	
	5700K	90x90°	152	20159	133	
		45x100°	147	19870	135	
		65x95°	161	20421	127	
165W	4000K	90x90°	143	23452	164	
		45x100°	135	22400	166	
		65x95°	151	24153	160	
	5000K	90x90°	152	25031	165	
		45x100°	148	23714	160	
		65x95°	163	25916	159	
	5700K	90x90°	147	24087	164	
		45x100°	143	23692	166	
		65x95°	151	24153	160	

### Standard Voltage Lumen Data Breakdown:

ITEM#	SELECTABLE WATTAGE	SELECTABLE KELVIN	SELECTABLE BEAM ANGLE	EFFICACY (lm/w)	LUMEN OUTPUT	WATTAGE
ESL-LHB-165240W-54057	165W	4000K	90x90°	155	25784	166
			45x100°	151	25244	167
			65x95°	168	26574	158
		5000K	90x90°	161	26776	166
			45x100°	159	26268	165
			65x95°	170	26722	157
		5700K	90x90°	156	25939	166
			45x100°	155	25609	165
			65x95°	166	26258	158
	215W	4000K	90x90°	148	32214	217
			45x100°	145	31479	217
			65x95°	161	33124	206
		5000K	90x90°	156	33588	216
			45x100°	153	33000	216
			65x95°	165	34071	206
		5700K	90x90°	151	32715	217
			45x100°	150	32314	216
			65x95°	160	33211	207
	240W	4000K	90x90°	144	34848	242
			45x100°	140	33813	242
			65x95°	156	35950	230
		5000K	90x90°	152	36061	238
			45x100°	149	35708	240
			65x95°	162	36762	227
5700K		90x90°	147	35204	239	
		45x100°	146	35145	240	
		65x95°	157	35604	227	
ESL-LHB-255320W-54057	255W	4000K	90x90°	152	38808	256
			45x100°	147	37769	257
			65x95°	165	40907	248
		5000K	90x90°	159	40298	253
			45x100°	156	39589	253
			65x95°	170	41415	244
	5700K	90x90°	152	38725	255	
		45x100°	147	37584	255	
		65x95°	163	39974	246	
	295W	4000K	90x90°	146	43114	296
			45x100°	140	41580	296
			65x95°	162	45919	283
5000K		90x90°	156	45140	290	
		45x100°	150	43535	290	
		65x95°	166	46727	282	
320W	5700K	90x90°	147	43340	295	
		45x100°	143	41922	294	
		65x95°	159	44932	283	
	4000K	90x90°	139	44778	322	
		45x100°	137	44152	322	
		65x95°	160	49542	309	
5000K	90x90°	151	47279	314		
	45x100°	149	46481	312		
	65x95°	169	51076	303		
5700K	90x90°	144	46072	320		
	45x100°	140	44779	319		
		65x95°	153	46841	307	



### High Voltage Lumen Data Breakdown:

ITEM#	SELECTABLE WATTAGE	SELECTABLE KELVIN	SELECTABLE BEAM ANGLE	EFFICACY (lm/w)	LUMEN OUTPUT	WATTAGE
ESL-LHB-165240W-54057-HV	165W	4000K	90x90°	155	25784	166
			45x100°	151	25244	167
			65x95°	168	26574	158
		5000K	90x90°	161	26776	166
			45x100°	159	26268	165
			65x95°	170	26722	157
		5700K	90x90°	156	25939	166
			45x100°	155	25609	165
			65x95°	166	26258	158
	215W	4000K	90x90°	148	32214	217
			45x100°	145	31479	217
			65x95°	161	33124	206
		5000K	90x90°	156	33588	216
			45x100°	153	33000	216
			65x95°	165	34071	206
		5700K	90x90°	151	32715	217
			45x100°	150	32314	216
			65x95°	160	33211	207
	240W	4000K	90x90°	144	34848	242
			45x100°	140	33813	242
			65x95°	156	35950	230
		5000K	90x90°	152	36061	238
			45x100°	149	35708	240
			65x95°	162	36762	227
5700K		90x90°	147	35204	239	
		45x100°	146	35145	240	
		65x95°	157	35604	227	
ESL-LHB-255320W-54057-HV	255W	4000K	90x90°	152	38808	256
			45x100°	147	37769	257
			65x95°	165	40907	248
		5000K	90x90°	159	40298	253
			45x100°	156	39589	253
			65x95°	170	41415	244
		5700K	90x90°	152	38725	255
			45x100°	147	37584	255
			65x95°	163	39974	246
ESL-LHB-255320W-54057-HV	295W	4000K	90x90°	146	43114	296
			45x100°	140	41580	296
			65x95°	162	45919	283
		5000K	90x90°	156	45140	290
			45x100°	150	43535	290
			65x95°	166	46727	282
		5700K	90x90°	147	43340	295
			45x100°	143	41922	294
			65x95°	159	44932	283
ESL-LHB-255320W-54057-HV	320W	4000K	90x90°	139	44778	322
			45x100°	137	44152	322
			65x95°	160	49542	309
		5000K	90x90°	151	47279	314
			45x100°	149	46481	312
			65x95°	169	51076	303
		5700K	90x90°	144	46072	320
			45x100°	140	44779	319
			65x95°	153	46841	307